

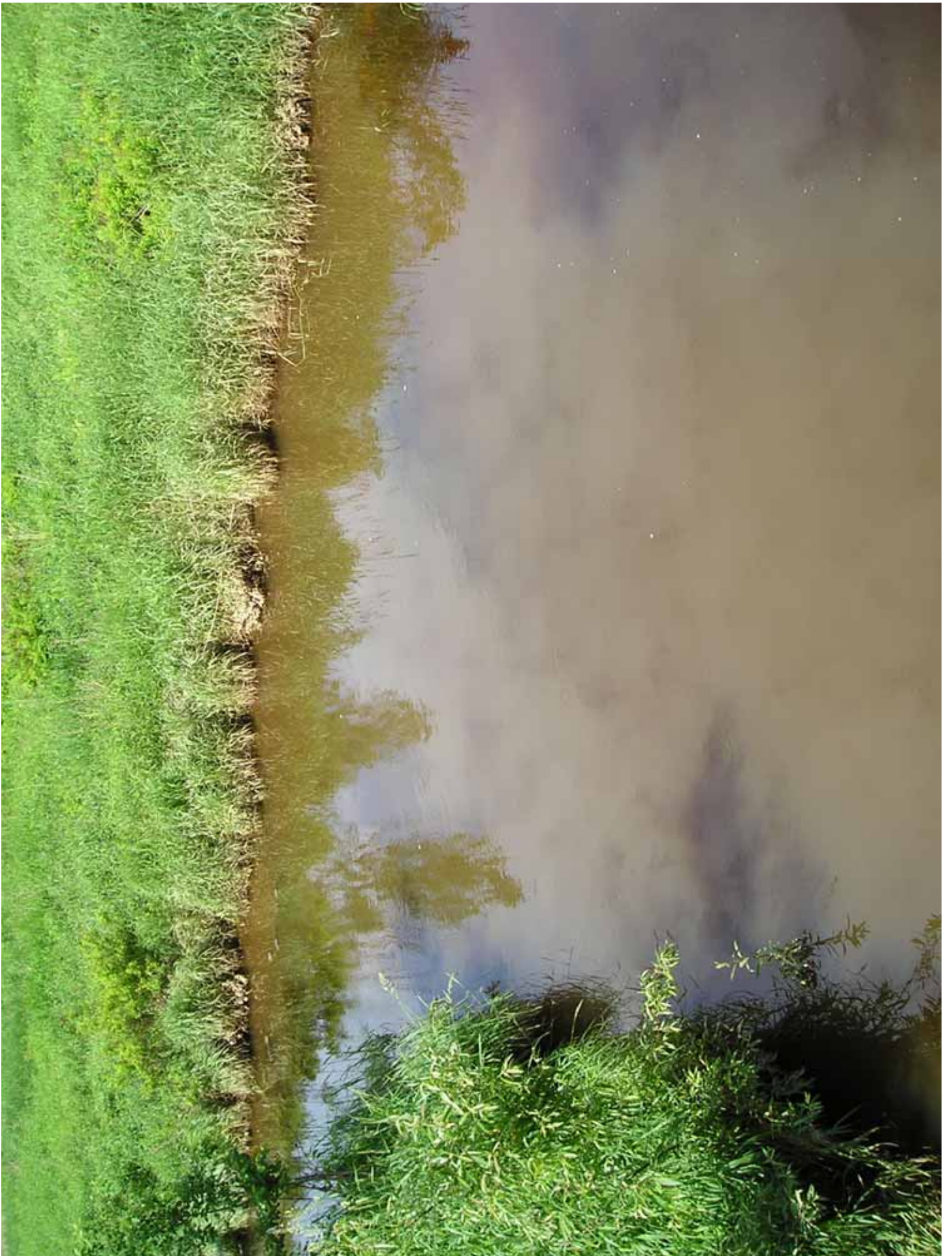


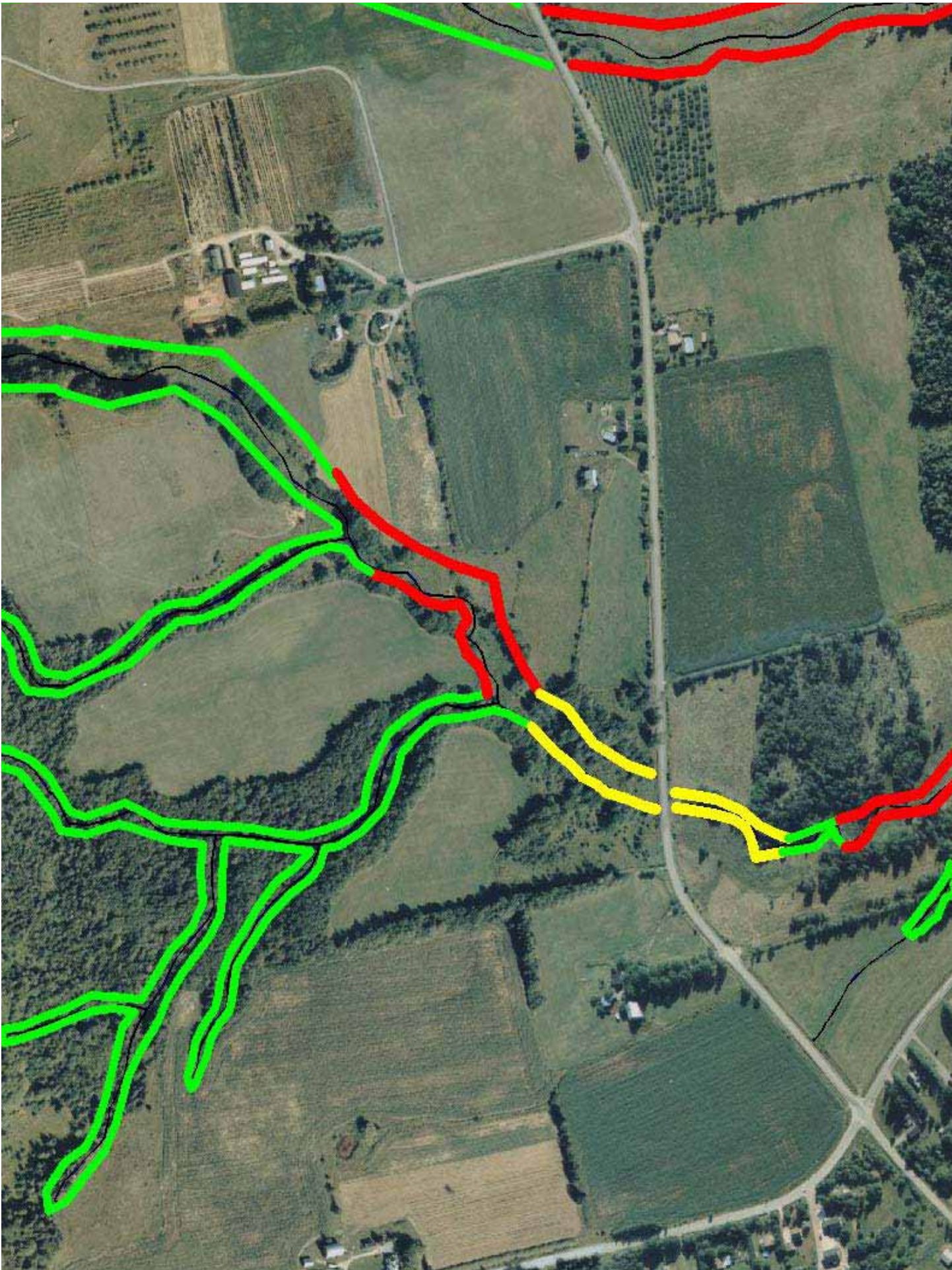
Riparian Health Assessment Project

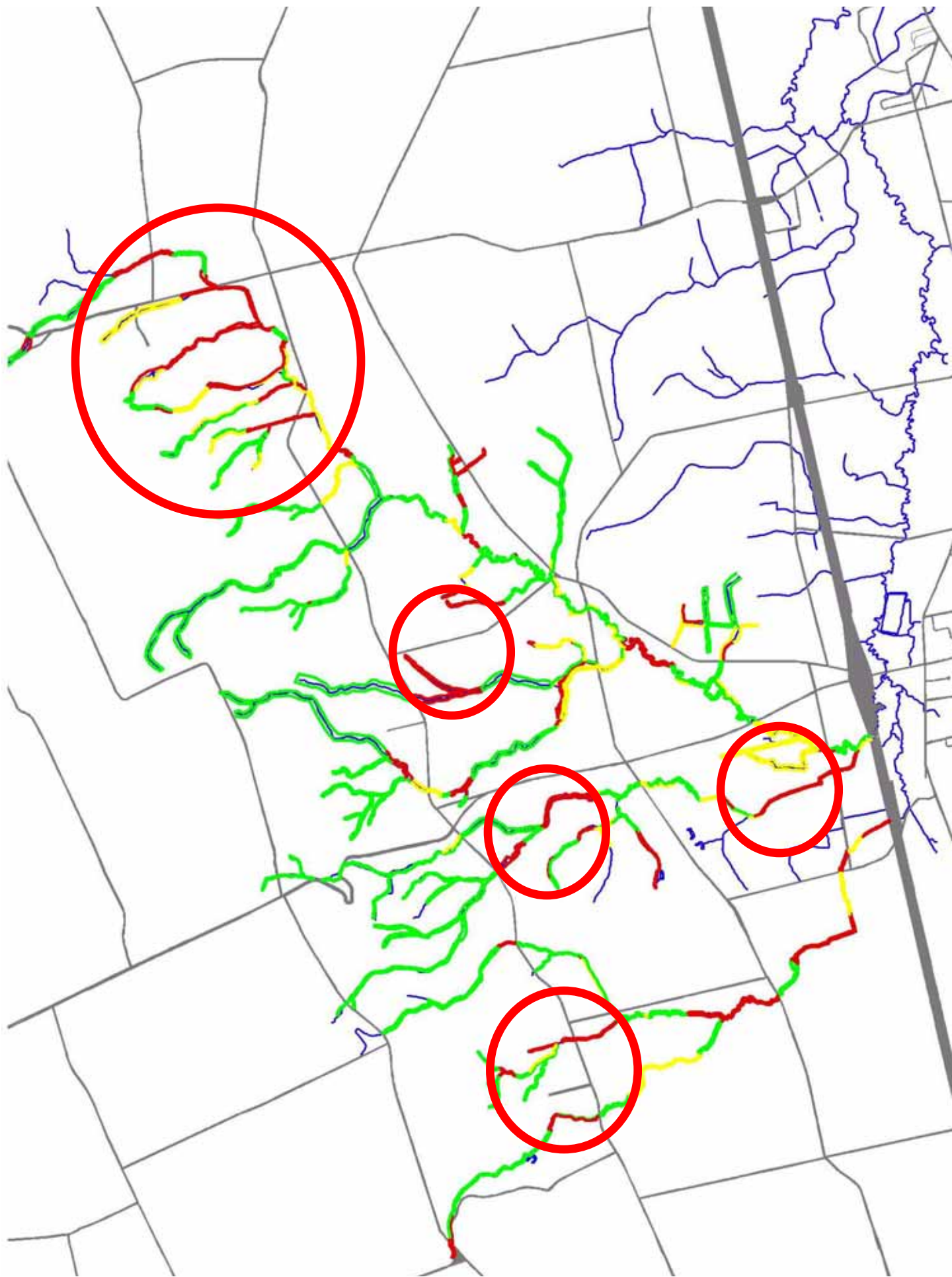
Agriculture

 NOVA SCOTIA









The Process for Assessments

1. Turn on GPS unit
2. Walk Riparian Area
3. Complete Assessment data sheet
4. Download data direct to GIS

Who's Doing RHA's?

- Federation of Agriculture
- Watershed Groups
- Individual Farmers (FIF)

Show Me The Money!

- **Farm Investment Fund**
 - Eligibility
 - Categories
- **Water related Projects**
 - Quantity
 - Quality

Water Quantity



Water Quantity

- Ditching, Tile Drainage, Beaver Pond Management (50-70% funding)
- Wells, Ponds, Dams, Pipelines, Spring Development, Cisterns (66% funding)
- Irrigation, Livestock Watering (50-75% funding)

Water Quality

- **Farm Water Treatment System
(66% funding)**
- **Pond Cleanout, Treatment Ponds,
Wetland Restoration, Manure
Storage, Handling and Application,
Farmyard Runoff Control, Facility
Relocation (50-75% funding)**

Water Quality BMP's

- **Pesticide/Fuel/Fertilizer/Silage Storage, Waste Composting**
- **Well Water Management**
- **Riparian Area Management**
- **Erosion Control**
- **Land Management for Soil at risk**
- **Improved Cropping Systems**
- **Winter Cover Crops**
- **Improved Pest Control**

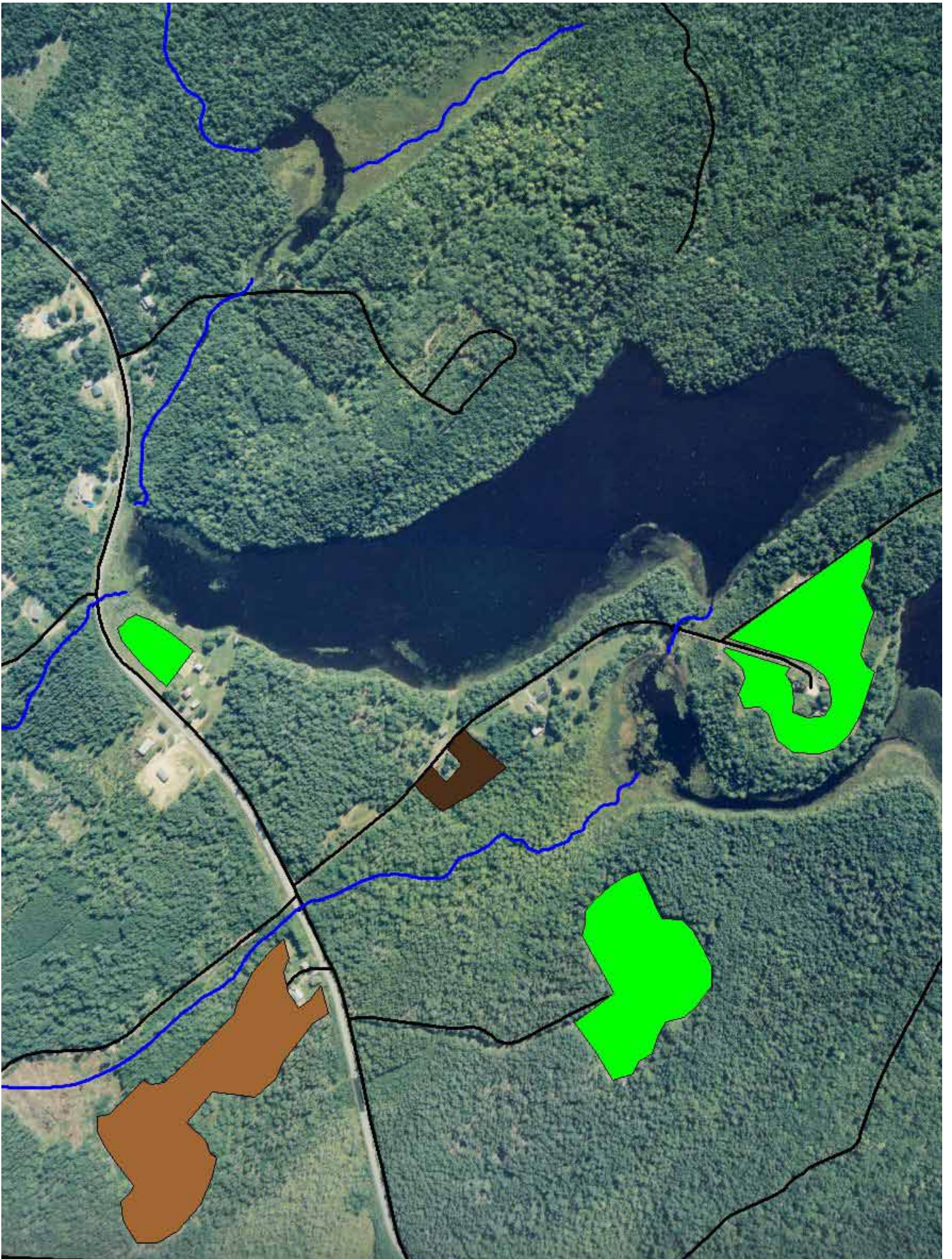
Water Quality BMP's

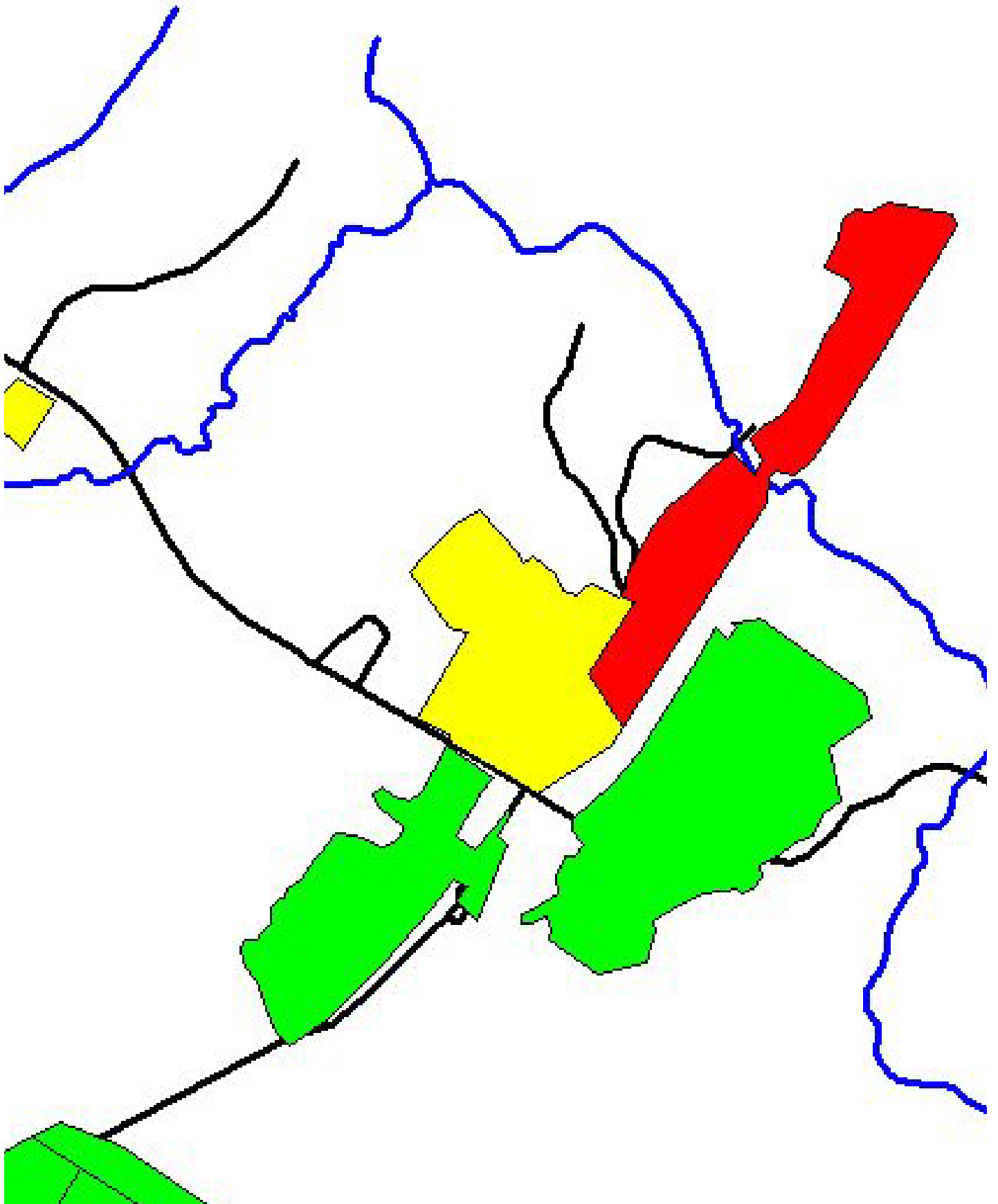
cont








- Recovery of Wastewater
- Shelterbelt establishment
- Soil Erosion Control Planning
- Riparian Health Assessments

(30-75% funding available)







<i>Land Owner</i>	<i>Risk</i>	<i>Solution</i>	<i>Cost</i>
	High	1100m of fencing 4 water sources 3 stream crossings 2 manure storages	71000.00
	High	150m of fencing water source manure storage	12300.00
	High	650m of fencing 2 water sources 2 stream crossings	10500.00
	High	300m of fencing water source manure storage	28100.00
	High	1100m of fencing water source stream crossing	7700.00
	High	350m of fencing water source	3400.00
	High	300m of fencing water source	3250.00

Wrap Up / Lessons Learned

- Game that requires patience
- Involve farmers
- Use technology: particularly maps
- Implement solution based process
 - Clear problem definition/identification
 - Resource opportunities and gaps
 - Focus on solution

